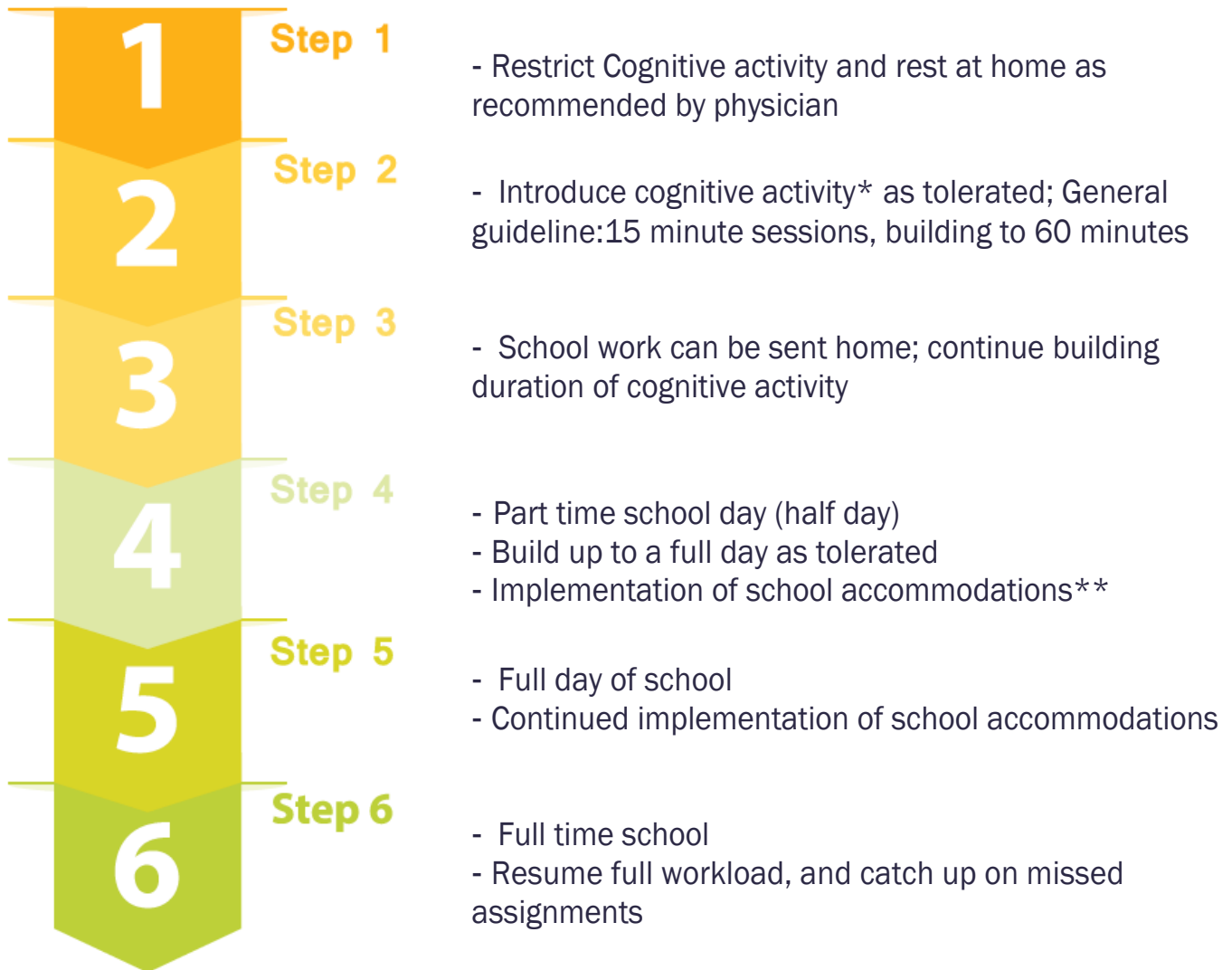




Sturgeon Public School Division

Concussion Management

Return to Learn Guidelines



*Examples of cognitive activity are puzzles, Sudoku, word games, school assignments/tests, reading, texting, video games, computer, television, and conversations

**Please see list of guidelines for learning accommodations for students with concussions from the BC Injury Research and Prevention Unit

For more information please visit:

www.braincarecentre.com
www.cattonline.com
www.parachutecanada.org