

Introduction to Disability Services



Disability Services



Meet the Team



Disability Services

Helen Lawrence



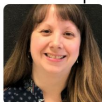
Specialized Services
Coordinator

Jesica Logan



Office Assistant

Kim Sharpe



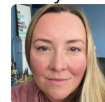
Administrative
Assistant

Stefanie Bovenmars



Family Coach

Ashley Coote



Speech Language
Pathologist

Kim Fraser



Occupational
Therapist

Kate Watt



Educational Psychologist/
Occupational Therapist

Damien Daly



Registered Provisional
Psychologist//
BCBA

Jenni Maas



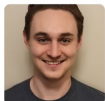
Physical
Therapist

Rebecca Quaale



Registered
Psychologist

Chris Brett



Home Facilitator

Kamala Young



Home Facilitator

Lauren Atkinson



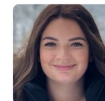
Home Facilitator &
Behaviour Consultant

Marcy Bruce



Home Facilitator

Sarah Piers



Home Facilitator



Trans-disciplinary Team



Teams are uniquely built to meet the needs of the child and family.



Our trans-disciplinary team may include:

- A speech-language pathologist
- An occupational therapist
- A psychologist
- A physical therapist
- A behaviour specialist
- A home facilitator
- A family coach



Our Service



- A branch of Sturgeon Public Schools
- DS office is located within Gibbons School
- Started as a pilot project in 2010
- Specialized support provided by the Disability Service (DS) Team to compliment learning and functioning for families in the home/community.



FSCD Partnership for Family Centered Services

While most staff are employees of Sturgeon Public Schools, the program and DS team is funded by the FSCD* government program. *Family Support for Children with Disabilities

Families of children in pre-kindergarten to grade 12 with extraordinary needs, can apply for DS services for their family and child through application through FSCD.

This is **non-educational** programming and geared to support skill development, participation, and functioning in meaningful day-to-day activities and experiences that will assist in both their life and educational journey.



FSCD Partnership for Family Centered Services

Family centered service delivery reinforces the importance of viewing the family and child as an entire unit and respecting the values, cultural background and unique needs of each family.

Services to focus on the priorities and functioning of the family, and related to activities that are most meaningful to them.

The type, level and duration of FSCD services a family receives is based on the extraordinary needs of the child resulting from the child's developmental profile as well as strengths, abilities and resource needs of the family.

There are two types of services that Disability Services offers:

- **Behavioural/Development Supports (BDS)** - 6 month contract when working on one targeted area of development. E.g., Behaviour
- **Specialized Services (SS)** - more intensive support for 1 year, when working on 2 or more targeted areas of development. E.g., Behaviour, Communication and Mobility



Who Can Apply for Services?

Parent/legal guardian of children with extraordinary needs:

- Who is under 18 years of age
- With a diagnosed disability

***diagnosis** for a disability that is due to a developmental, physical, sensory, mental or neurological condition or impairment, and/or health condition that significantly impacts their daily living activities such as eating, grooming, walking, interacting with others, playing, and problem solving (FSCD Disability Criteria)

You may recognize a family that may benefit from support to find/access community resources or handling the day-to-day challenges of raising a child with extraordinary needs, etc. The child may have developmental delays and/or extraordinary needs in areas of communication, behaviour, self-care, or adaptive functioning. Service delivery is flexible and may include:

- in person or virtual support,
- direct or consultation,
- connecting and/or partnering with other resources/services/programs.



Find Your Village

Find Your Village is a unique collaborative project between Redwater Hype and SPS Disability Services for community members to join for conversation, connection and fun activities. We have events monthly to provide a safe space for community members ages 0 - 99.

Our goal is to provide a space where adults can come together to meet, to talk and to learn from one another, enhance communication, connect with others, build relationships and reduce isolation within our communities.

Our hope is that everyone will feel supported and valued, while connecting with other caring community members.

What: Topics are determined by the group



Facebook Page: [Find Your Village Sturgeon County](#)

Share the Opportunity

Our biggest contributors to our success is Sturgeon Public Schools including school staff, clinicians, trustees, and community members who talk about the support and benefits that the Sturgeon DS Team provides.

Find out more about FSCD: [FSCD](#)

Check out our Website: [Disability Services Website](#)

Our Facebook Page: [Disability Services SPS Facebook](#)

Find Your Village Facebook Page: [Find Your Village Sturgeon County](#)



Thank You!

On behalf of the entire DS Team, we appreciate that you took the time to learn about the home/community supports that the Sturgeon Disability Services Team provides. We look forward to continuing the important work of supporting our Sturgeon families.

Contact Us:

Helen Lawrence

Specialized Services Coordinator, DS Team

Helen.Lawrence@sturgeon.ab.ca

780-939-4341 Ext.1265



Disability Services

